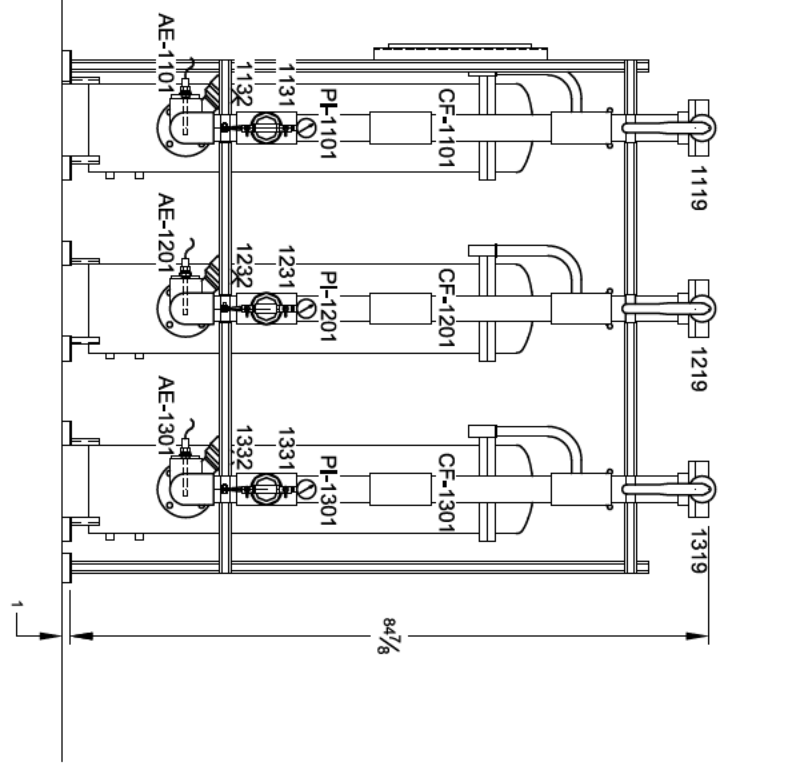
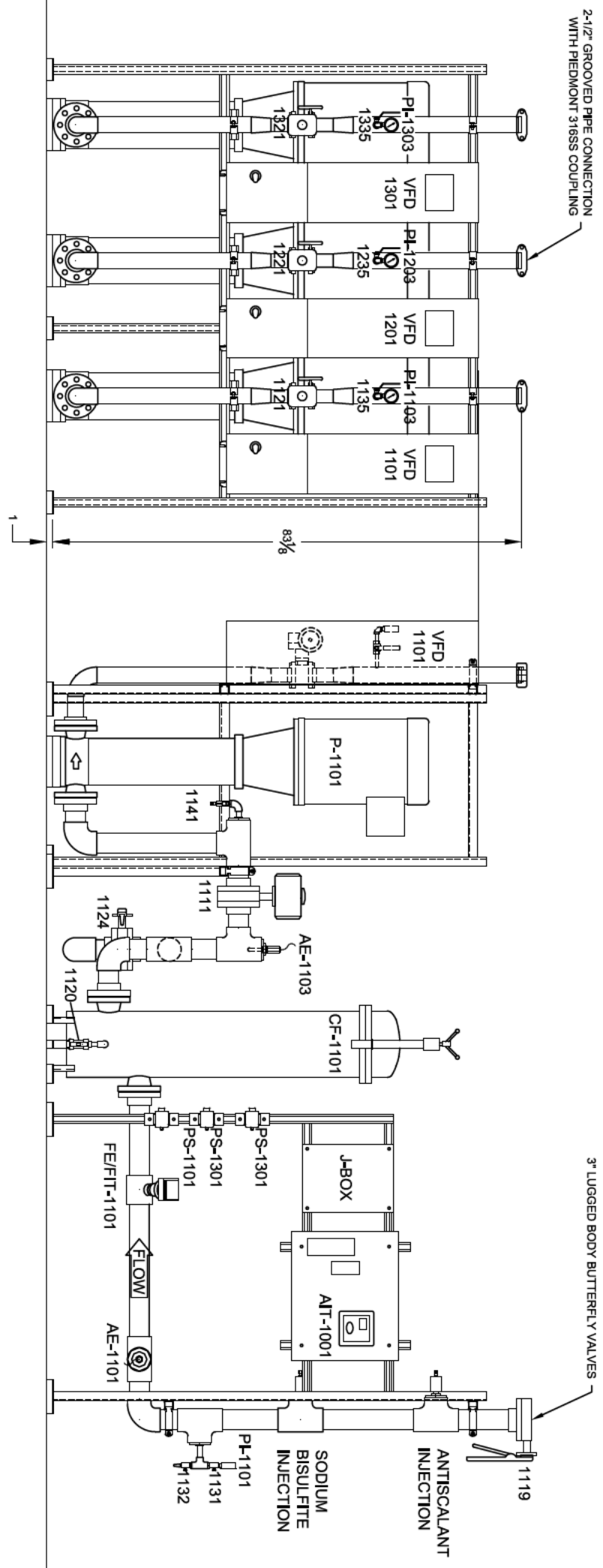


- NOTES:**
1. ALL LOW PRESSURE PIPING IS SCH 80 PVC. FITTINGS ARE SW. THREADED CONNECTIONS ARE USED ONLY WHERE NECESSARY. HIGH PRESSURE PIPING IS SCH 10 316L SS WITH BW FITTINGS. GROOVED PIPE CONNECTIONS ARE SCH 40 316L SS WITH CUT GROOVES, 316 CLAMPS/COUPPLINGS, 316 SS HARDWARE AND EPDM GASKETS.
 2. LOW PRESSURE SKID CONNECTIONS ARE TWO-PIECE 150# FLANGES. PROCESS TUBING IS 1/4" OD PE WITH PP TUBE FITTINGS. HIGH PRESSURE SKID CONNECTIONS ARE 300# SLIP ON WELD FLANGES.
 - 3.
 4. FLANGE HARDWARE IS 316SS: F593G GROUP 2 HEX HD BOLTS, A193 GR 88M STUDS, F594G GROUP 2 316SS HEX NUTS, 316SS SAE STYLE FLAT WASHERS, AND 410SS INTERNAL TOOTH LOCK WASHERS.
 5. PIPE SUPPORTS SHOWN ARE BY _____ THEY ARE 316SS STRUT CHANNEL WELDED OR BOLTED TOGETHER. PIPE CLAMPS AND FASTENING HARDWARE IS 316 SS. ANCHOR BOLTS ARE BY OTHERS. ALL 1" THICK PLASTIC SPACERS UNDER THE PIPE SUPPORTS AND EQUIPMENT ARE BY OTHERS.
 6. LOW PRESSURE GASKETS ARE FULL FACE 1/8" THICK EPDM. HIGH PRESSURE GASKETS ARE FULL FACE 1/8" BLUE GYLON.



A		RELEASED FOR REVIEW AND COMMENT		REV.	DESCRIPTION	BY	APPROV.	DATE
								05-11-18
TITLING WEIGHTS: XXX LBS		TITLE						
SHIPPING WEIGHTS: XXX LBS		DESCRIPTION		CARTRIDGE FILTER AND PUMP PIPING FOR (3) 100 GPM ROS ON (2) BOLT TOGETHER SKIDS				
OPERATING WEIGHTS: XXX LBS		CUSTOMER		DATE: 05-07-18 DATE: 05-07-18 SHEET 1 OF 1				
ALL DIMENSIONS ARE IN INCHES UNLESS NOTED.		TOLERANCES:		DRAWING SCALE: 1" = 8"				
DRAWING BY: _____		CHECKED BY: _____		REV A				