

FINAL RECORD DRAWING

THIS DRAWING IS SUBMITTED AS FINAL RECORD AND IS AUTHORIZED FOR FABRICATION AND ASSEMBLY. DRAWING REFLECTS TO DATE CHANGES MADE BY CUSTOMER PER RETURNED APPROVAL DRAWINGS/LATEST CHANGE ORDER/PURCHASE ORDER.

Project manager: Dan Nollin Date: 12-30-14

- NOTES:
- 1) TANK AND INTERIOR PLATES TO BE FABRICATED OF 1/4" THK CARBON STEEL ASTM A-36.
 - 2) PIPING INTEGRAL TO TANK TO BE ASTM A-53, BLACK SCH. 40. ALL OTHER PIPING TO BE PVC SCH. 80.
 - 3) FLANGES TO BE FLAT FACE, 150# ANSI, BOLT CIRCLE TO STRADDLE CENTER LINE AND WILL HAVE A 6" PROJECTION UNLESS OTHERWISE NOTED.
 - 4) INFLUENT FLOW RATE IS 400 GPM.
 - 5) ANCHOR BOLTS SUPPLIED BY OTHERS, 1-1/4" HOLES PROVIDED
 - 6) ALL WETTED MOUNTING HARDWARE TO BE 316 STAINLESS STEEL, ANTI SEIZE TO BE USED.
 - 7) ALL WELDS TO BE CONTINUOUS, INTERNALLY AND EXTERNALLY.

WEIGHTS (APPROXIMATE):

EMPTY - 5,900 LBS.
FLOODED - 44,000 LBS.

PAINT SPECIFICATIONS:

INTERIOR:
SURFACES PREPARED TO SSPC-SP10, NEAR WHITE METAL BLAST AND COATED WITH POLYAMINE EPOXY - CARBOLINE PHENOLINE 308 (GRAY) 20 MILS DFT.

EXTERIOR:
SURFACES PREPARED TO SSPC-SP6, COMMERCIAL BLAST AND COATED WITH DUPONT CORLAR 825-Y-9031/VF-Y-632 CHROMATE FREE PRIMER, 4 MILS. MIN., FINISH COAT TO BE DUPONT IRON 326 POLYURETHANE ENAMEL, 2 MILS. MIN., FINISH COLOR TO BE SAFETY BLUE.

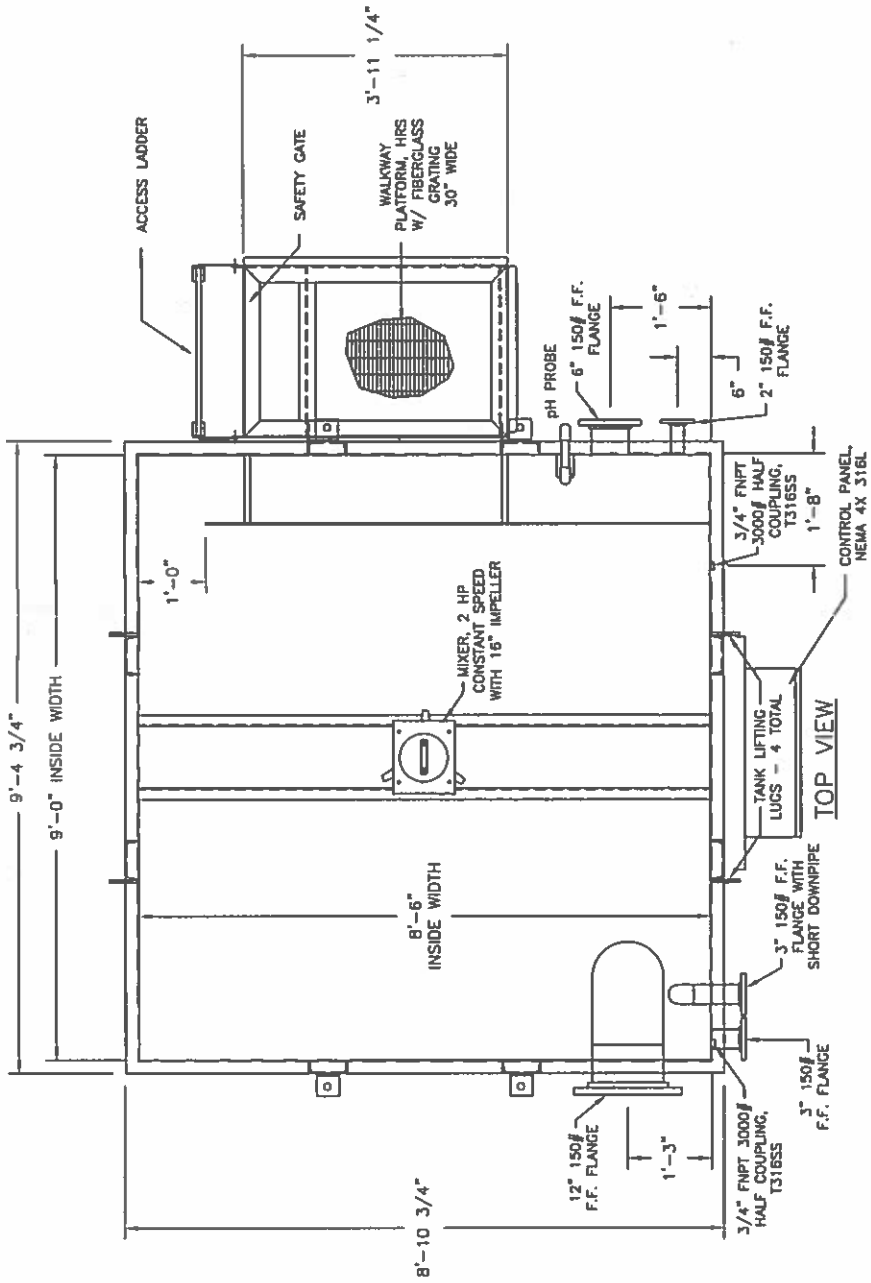
NOTES FOR WALKWAY ASSEMBLY:

1) ALL MATERIALS FOR WALKWAY, INCLUDING POSTS, GRATING AND LADDER, ARE TO BE A-36 HRS. WALKWAY GRATING TO BE 1" THICK FIBERGLASS MESH TO BE 1" X 4" PATTERN. NOT SLIP SURFACE FOR TOP OF GRATING REQUIRED. GRATING SHALL BE ANCHORED TO EACH SUPPORTING MEMBER WITH AT LEAST TWO ANCHORING DEVICES.

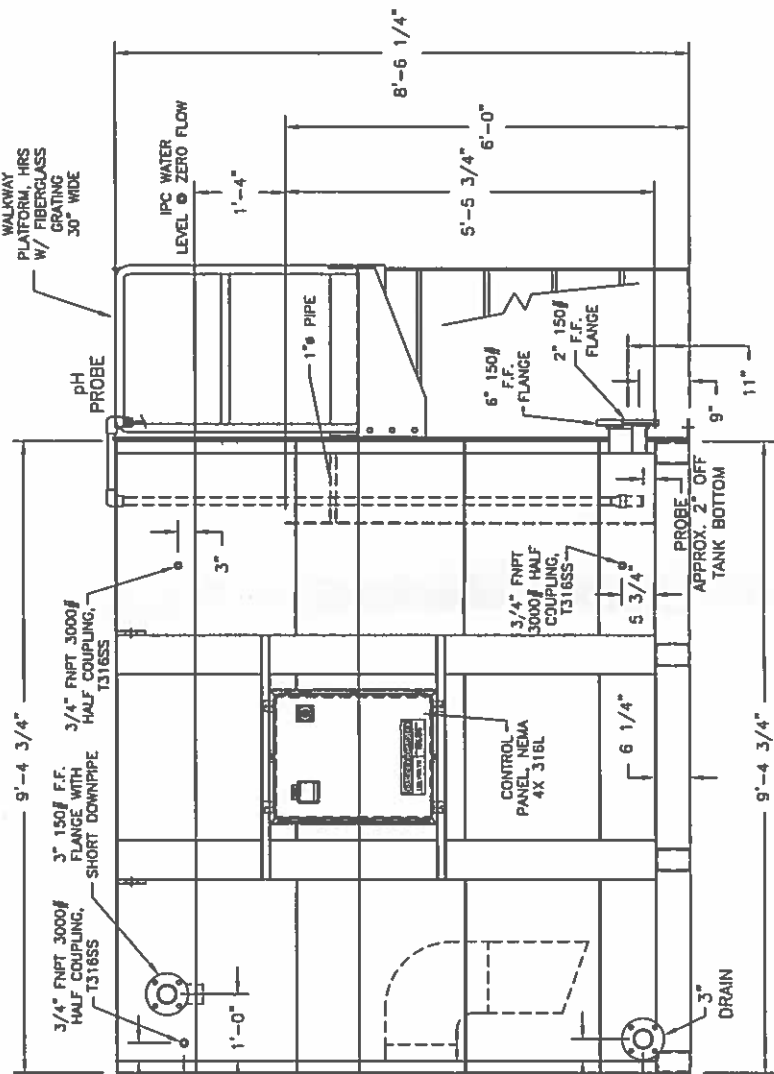
2) SAFETY GATE INCLUDED BUT NOT SHOWN. GATE WILL BE ANCHORED TO THE POST NOT THE TANK. MCMASTER CARR SWING GATE MODEL 8109T11 - STYLE D, GATE TO BE PAINTED SAFETY YELLOW.

PART NUMBER: 391047

ELLIS CORPORATION ENGINEERS AND MANUFACTURERS		
ANADARKO/OMNI WATER SOLUTIONS EFFLUENT NEUTRALIZATION TANK PRELIMINARY DWG.		
MATERIAL CARBON STEEL TANK	REV. DATE A 12-2-14	REV. DATE B 12-5-14
DATE REV.	12-20-14	01-30-15
DRAWN BY: JUS	CHECKED BY:	APPROVED BY:
DATE: 12-4-14	DATE:	DATE:
UNLESS OTHERWISE NOTED: THE NUMBER OF SHEETS, THE NUMBER OF SHEETS TO BE SHOWN, THE NUMBER OF SHEETS TO BE SHOWN, THE NUMBER OF SHEETS TO BE SHOWN, THE NUMBER OF SHEETS TO BE SHOWN.		
SCALE	SCALE	SCALE
PROJ. CLASS	PROJ. CLASS	PROJ. CLASS
DRAWING NUMBER	DRAWING NUMBER	DRAWING NUMBER
NTS	39	1047 D

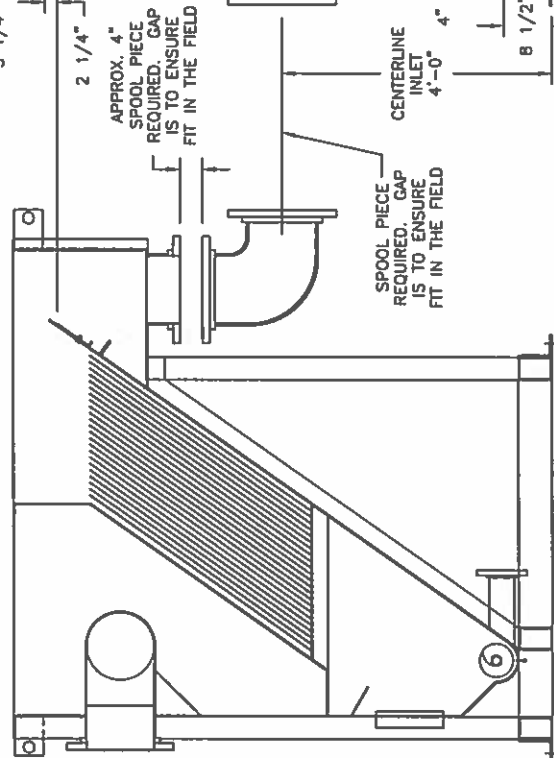


4,570 GALLONS OVERALL CAPACITY
3,135 GALLON OPERATING CAPACITY
AT 5'-5 3/4" WALL HEIGHT



Ellis Corporation 1400 W. Bryn Mawr Ave. Hasca, IL 60143			
MODEL No. CNT-400	SERIAL No. C06112-00		
MAXIMUM CAPACITY 400 GPM	VOLUME 480	PHASE 3	FREQ. 60
SUPPLY GAS PRESSURE PSI	WORKING GAS PRESSURE PSI	MAX. AIR PRESSURE PSI	U.S. PATENT #

NAMEPLATE, DATA DETAIL, FULL SCALE



REFERENCE IPC SECTION VIEW

SIDE VIEW