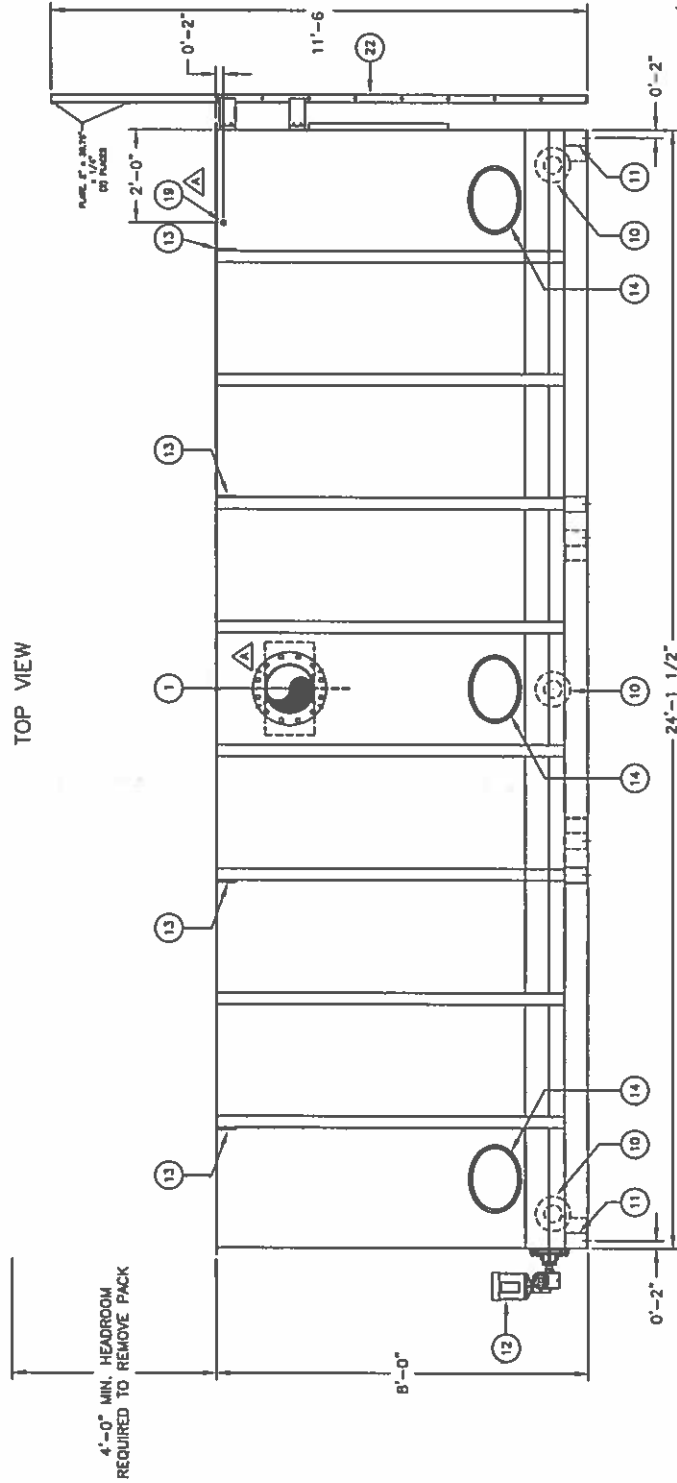
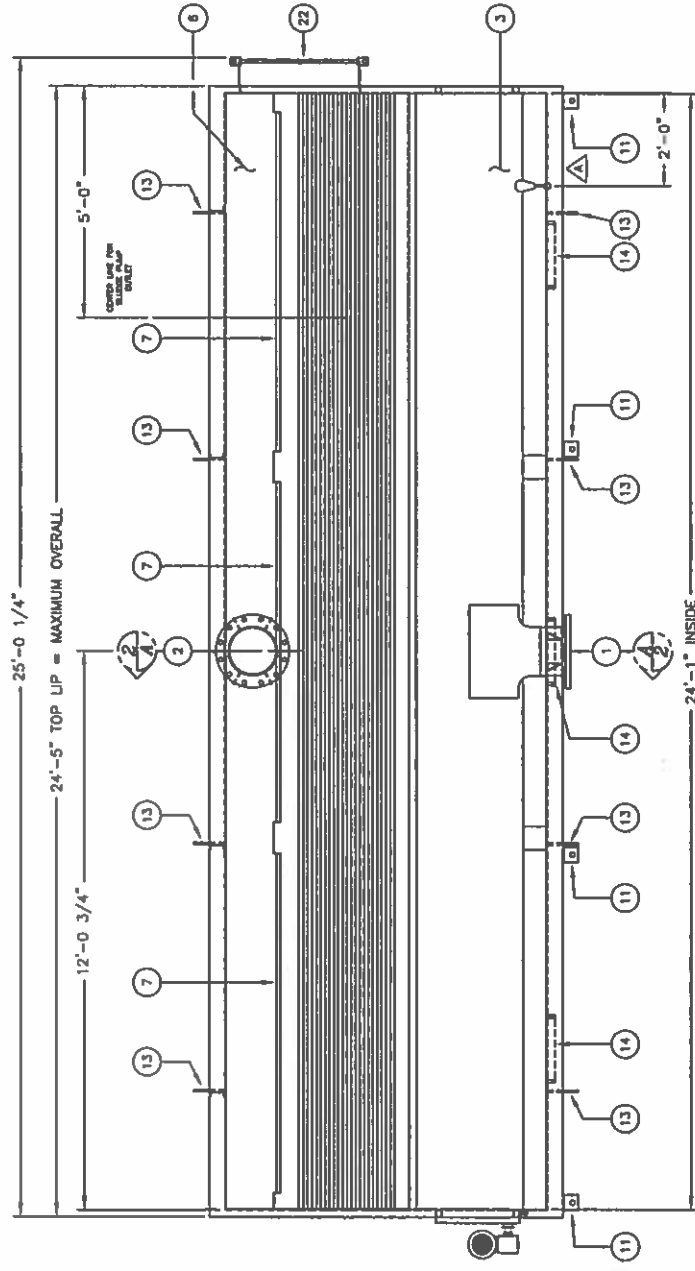


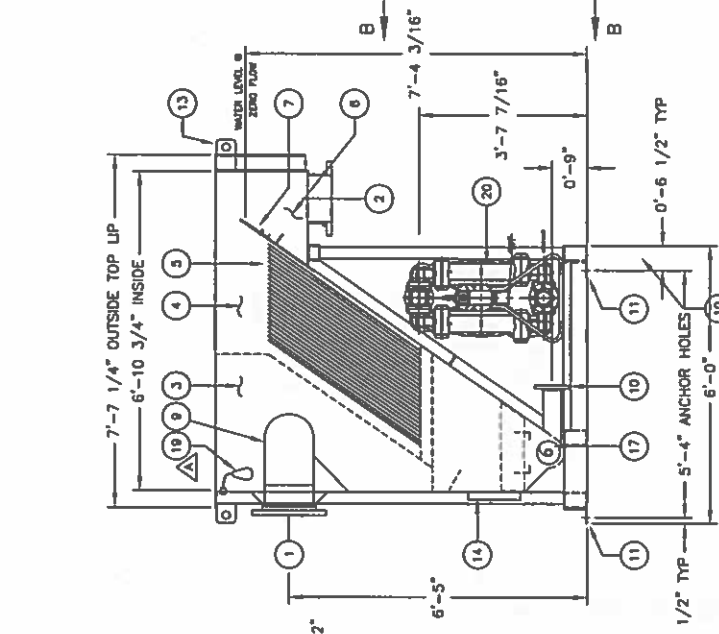
FINAL RECORD DRAWING

THIS DRAWING IS SUBMITTED AS FINAL RECORD AND IS AUTHORIZED FOR FABRICATION AND ASSEMBLY. DRAWING REFLECTS TO DATE CHANGES MADE BY CUSTOMER PER RETURNED APPROVAL DRAWINGS/LATEST CHANGE ORDER/PURCHASE ORDER.

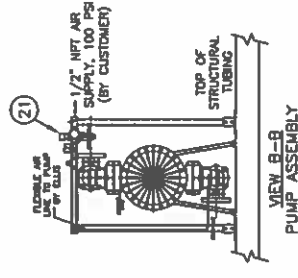
Project manager: Dan Naitlin Date: 12-30-14



INFLUENT END VIEW



FRONT VIEW



Ellis Corporation
1400 W. Bryn Mawr Ave.
Itasca, IL 60143

MODEL No. IPC-4-1320 SERIAL No. C05112-00

MAXIMUM CAPACITY 400 GPM PHASE 1 FREQ. 60

VOLUME 120 FLA 10A IN W.C.

SUPPLY GAS PRESSURE WORKING GAS PRESSURE IN W.C.

AIR PRESSURE: MIN PSI MAX PSI

U.S. PATENT #

NAMEPLATE, ITEM 23,
DATA DETAIL
FULL SCALE

DET.	DESCRIPTION	MATERIAL	LENGTH	QTY.	PART No.
-	IPC-4-1320 GENERAL ARRANGEMENT DRAWING	CARBON STEEL	-	1	3133500008
1	INFLUENT FLANGE, 12" 150# F.F. FLANGE W/GUSSETS	SCH.40 C.S.	-	1	SEE FAB DWG
2	EFFLUENT FLANGE, 12" 150# F.F. FLANGE W/GUSSETS	SCH.40 C.S.	-	1	SEE FAB DWG
3	INFLUENT DIFFUSION CHAMBER, APPROX. 1,860 GALLONS	-	-	1	SEE FAB DWG
4	SEPARATION CHAMBER	-	-	1	SEE FAB DWG
5	REMOVABLE PLATE PACK, 1/8" THICK PLATES	POLYPROPYLENE	4'-0"	6	SEE FAB DWG
6	EFFLUENT CHAMBER, APPROX. 370 GALLONS	-	-	1	SEE FAB DWG
7	ADJUSTABLE EFFLUENT WEIR PLATE	316L S.S.	11'-10 1/2"	3	SEE FAB DWG
8	SLUDGE COLLECTION CHAMBER, APPROX. 930 GALLONS	-	-	1	SEE FAB DWG
9	INFLUENT DIFFUSION BAFFLE	SCH.40 C.S.	-	1	SEE FAB DWG
10	SLUDGE OUTLET, 4" 150# F.F. FLANGE	SCH.40 C.S.	-	3	SEE FAB DWG
11	ANCHOR PLATE WITH 1 1/4" HOLE PROVIDED	3/8" C.S.	-	8	SEE FAB DWG
12	AUGER DRIVE, 1/2 HP, 115 V, 16, 60 HZ.	-	-	1	317045000K
13	LIFTING LUG	CARBON STEEL	5"	8	SEE FAB DWG
14	INSPECTION HATCH WITH NEOPRENE GASKET	CARBON STEEL	-	3	SEE FAB DWG
15	-	-	-	-	-
16	-	-	-	-	-
17	HELICOID AUGER	316L S.S.	-	2	317045000K
18	IPC-4-1320 WELDMENT	STEEL	-	1	314003D
19	HIGH LEVEL SWITCH & 3/4" NPT COUPLING	STEEL	-	1	2242000105
20	3" AIR SLUDGE TRANSFER PUMP	-	-	1	2231000111
21	AIR ASSEMBLY, 1/2", MOUNTED TO TANK	-	-	1	307011801
22	LADDER	HRS	-	1	SEE FAB DWG
23	NAMEPLATE, EQUIPMENT	-	-	1	600597801

- NOTES:
- TANK AND INTERIOR PLATES TO BE FABRICATED OF 1/4" THK CARBON STEEL ASTM A-36.
 - PIPING INTEGRAL TO TANK TO BE ASTM A-53, BLACK SCH. 40. ALL OTHER PIPING TO BE PVC SCH. 80.
 - FLANGES TO BE FLAT FACE, 150# ANSI, BOLT CIRCLE TO STRADDLE CENTER LINE AND WILL HAVE A 6" PROJECTION UNLESS OTHERWISE NOTED
 - INFLUENT FLOW RATE IS 400 GPM.
 - ANCHOR BOLTS SUPPLIED BY OTHERS, 1-1/4" HOLES PROVIDED
 - ALL WETTED MOUNTING HARDWARE TO BE STAINLESS STEEL, ANTI SEIZE TO BE USED.
 - ALL WELDS TO BE CONTINUOUS, INTERNALLY AND EXTERNALLY. WEIGHTS (APPROXIMATE):
EMPTY - 11,500 LBS.
FLOODED - 60,000 LBS.

PAINT SPECIFICATIONS:

INTERIOR:
SURFACES PREPARED TO SSPC-SP10, NEAR WHITE METAL BLAST AND COATED WITH POLYAMINE EPOXY - CAROLINE PHENOLINE 309 (GRAY), 20 MILS. DFT.

EXTERIOR:
SURFACES PREPARED TO SSPC-SP6, COMMERCIAL BLAST AND COATED WITH DUPONT CORLAR 825-Y-9031/AF-Y-632 CHROMATE FREE PRIMER, 4 MILS, MIN.; FINISH COAT TO BE DUPONT IRRON 326 POLYURETHANE ENAMEL, 2 MILS. MIN., FINISH COLOR TO BE SAFETY BLUE.

SHEET 1 OF 1 PART #: 314002D008

ELLIS CORPORATION
ENGINEERS AND MANUFACTURERS

IPC-4-1320 INCLINED PLATE CLARIFIER
GENERAL ARRANGEMENT DRAWING, OMNI WATER

MATERIAL	REV. LEVEL	C	DATE	12-20-14	DATE	12-20-14
CS SHELL	DATE REV.	A	12-12-14	B	12-20-14	
DATE REV.	DATE	12/20/14	DATE	1/20/2015		
DRAWN BY:	DWN	CHKD BY:	DATE	1/20/2015		
EDD No.	DATE	1/20/2015				
SCALE	1/20	DRAWING NUMBER	31	SHEET	4001	D