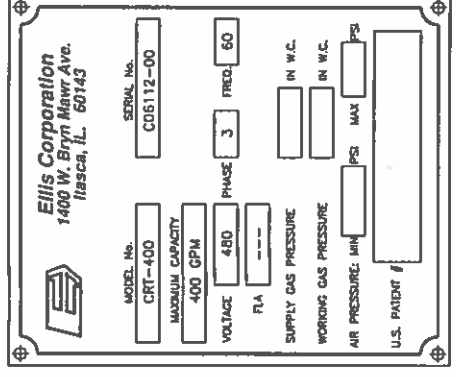


| ITEM | DESCRIPTION   | MATERIAL | QTY. | PART #      |
|------|---|----------|------|-------------|
| 1    | WELDMENT, CRT-400 (4,180/2000), 2 CHAMBER                       | HRS      | 1    | 381108000W  |
| R2   | PH ELECTRODE, CONNECTOR & TRANSMITTER                           |          | 1    | 387002B     |
| 2A   | SUBMERSIBLE PH TRANSMITTER                                      |          | 1    | 2236001092  |
| 2B   | PH ELECTRODE  | HRS      | 1    | 2236001111  |
| 3    | 1ST MIXING CHAMBER, 4,180 GAL VOLUME                            | HRS      | 1    | SEE FAB DWG |
| 4    | 2ND MIXING CHAMBER, 2005 GAL VOLUME                             | HRS      | 1    | SEE FAB DWG |
| 5    | EFLUENT WEIR CHAMBER  | HRS      | 1    | SEE FAB DWG |
| 6    | CHEMICAL INJECTION POINTS, 3/4" FNPT 3000# FULL COUPLING        | 316L SS  | 4    | SEE FAB DWG |
| 7    | MIXER, 1 HP, 58 RPM, 460/3/60HZ W/32" IMPELLER                  |          | 1    | 5913000187  |
| 8    | MIXER, 1/2 HP, VFD TO 58 RPM, 460/3/60HZ, W/32" IMPELLER        |          | 1    | 5913000185  |
| 9    | 1-1/4" ANCHOR HOLE, BOLT SUPPLIED BY OTHERS                     |          | 4    | SEE FAB DWG |
| 10   | CONTROL PANEL, NEMA 4X 316L                                     |          | 1    | 7777777     |
| 11   | VFD CONTROLLER, NEMA 4  |          | 1    | BY OTHERS   |
| 12   | NAMEPLATE, SEE DETAIL   |          | 1    |             |
| 13   | "ELLIS" LOGO--ADHESIVE BACKED LABEL                             | 304 SS   | 1    | 600597B01   |
| 14   | TANK LIFTING LUGS   |          | 4    | 5912000011  |
| 15   | 12" INLET FLANGE, 150#, FLAT FACE                               | HRS      | 4    | SEE FAB DWG |
| 16   | PIPE, 12" SCH 80 X 92" LONG                                     | HRS      | 2    | SEE FAB DWG |
| 17   | 12" OUTLET FLANGE, 150# FLAT FACE                               | PVC      | 1    | SEE FAB DWG |
| 18   | 3" DRAIN FLANGE, 150# FLAT FACE                                 | HRS      | 1    | SEE FAB DWG |
| 19   | RETENTION TANK SLUDGE INLET, 3" FLANGE, 150# FLAT FACE          | HRS      | 2    | SEE FAB DWG |
| 20   | HIGH LEVEL SWITCH POINTS, 3/4" FNPT 3000# FULL COUPLING         | 316L SS  | 4    | SEE FAB DWG |
| 21   | ANCHOR PAD, 4" x 4" x 3/8" THK WITH 1-1/4" HOLE                 | HRS      | 4    | SEE FAB DWG |
| 22   | ADJUSTABLE WEIR, EFFLUENT                                       | 316L     | 1    | SEE FAB DWG |
| 23   | POLYMER CHEMICAL INJECTION POINT, 3/4" FNPT 3000# FULL COUPLING | 316L SS  | 1    | SEE FAB DWG |
| 24   | PLATFORM WITH SAFETY GATE, FIBERGLASS GRATING                   |          | 1    | SEE FAB DWG |
| 25   | LADDER  | HRS      | 1    | SEE FAB DWG |
| 26   |   |          |      |             |
| 27   |   |          |      |             |

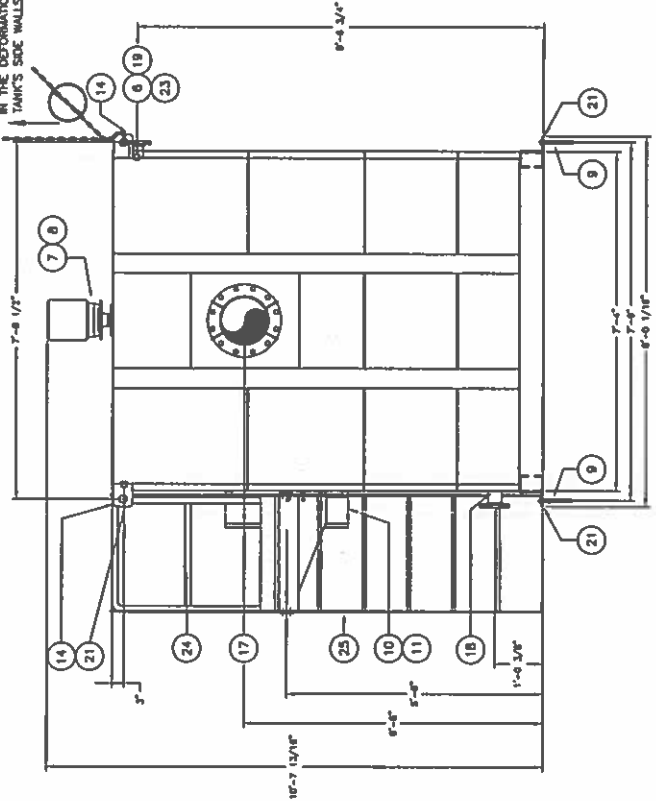
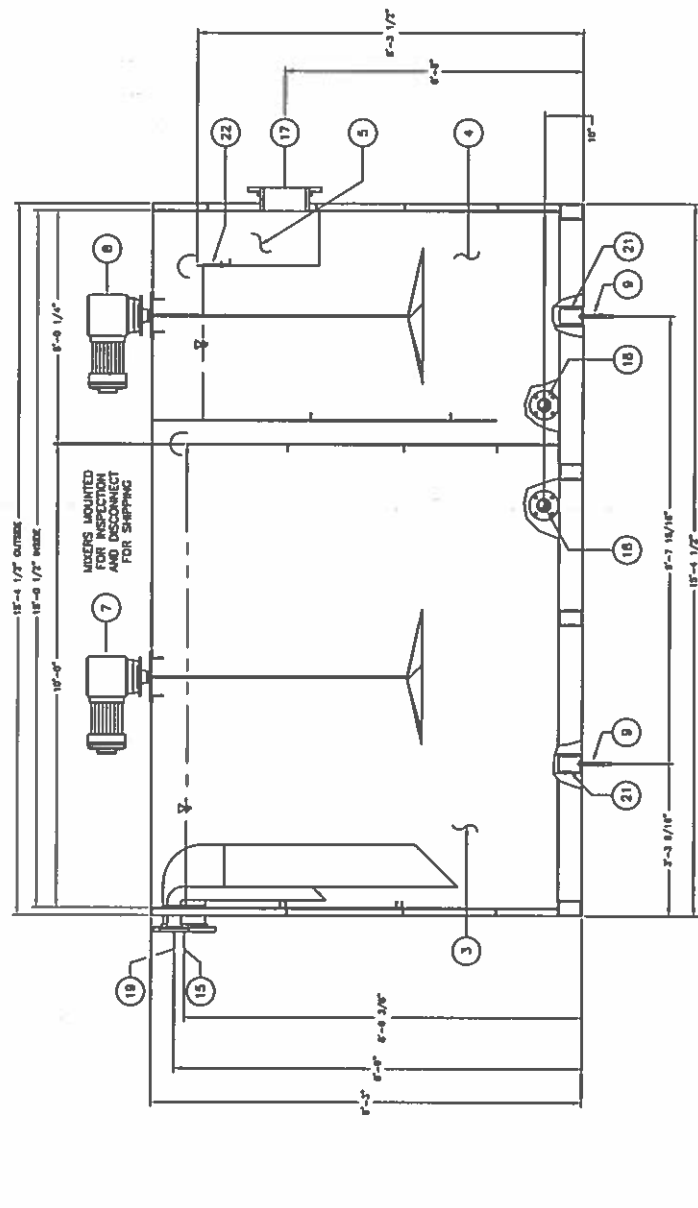
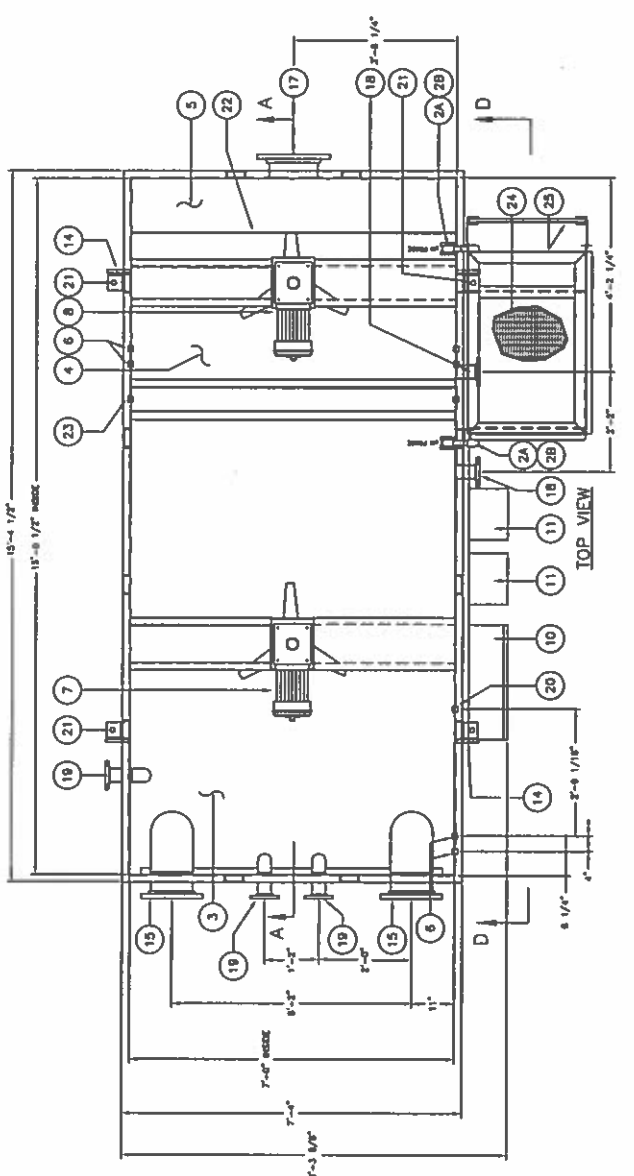
NOTES:  
 1) TANK AND INTERIOR PLATES TO BE FABRICATED OF 1/4" THK CARBON STEEL ASTM A-36.  
 2) PIPING INTEGRAL TO TANK TO BE ASTM A-53, BLACK SCH. 40. ALL OTHER PIPING TO BE PVC SCH. 80.  
 3) FLANGES TO BE FLAT FACE, 150# ANSI, BOLT CIRCLE TO STRADDLE CENTER LINE AND WILL HAVE A 6" PROJECTION UNLESS OTHERWISE NOTED  
 4) INFLUENT FLOW RATE IS 400 GPM.  
 5) ANCHOR BOLTS SUPPLIED BY OTHERS, 1-1/4" HOLES PROVIDED  
 6) ALL WETTED MOUNTING HARDWARE TO BE STAINLESS STEEL, ANTI SEIZE TO BE USED.  
 7) ALL WELDS TO BE CONTINUOUS, INTERNALLY AND EXTERNALLY WEIGHTS (APPROXIMATE):  
 EMPTY - 8,700 LBS.  
 FLOODED - 55,200 LBS.  
 PAINT SPECIFICATIONS:  
 INTERIOR:  
 SURFACES PREPARED TO SSPC-SP10, NEAR WHITE METAL BLAST AND COATED WITH POLYAMINE EPOXY - CAROLINE PHENOLINE 309 (GRAY), 20 MILS. DFT.  
 EXTERIOR:  
 SURFACES PREPARED TO SSPC-SP6, COMMERCIAL BLAST AND COATED WITH DUPONT CORLAR 925-Y-9031/VF-Y-632 CHROMATE FREE PRIMER, 4 MILS. MIN., FINISH COAT TO BE DUPONT IRON 326 POLYURETHANE ENAMEL, 2 MILS. MIN., FINISH COLOR TO BE SAFETY BLUE.

NOTES FOR WALKWAY ASSEMBLY:  
 1) ALL MATERIALS FOR WALKWAY, INCLUDING POSTS, GRATING AND LADDER, ARE TO BE A-36 HRS. WALKWAY GRATING TO BE 1" THICK FIBERGLASS, MESH TO BE 1" X 4" PATTERN. NOT SLIP SURFACE FOR TOP OF GRATING REQUIRED. GRATING SHALL BE ANCHORED TO EACH SUPPORTING MEMBER WITH AT LEAST TWO ANCHORING DEVICES.  
 2) SAFETY GATE INCLUDED BUT NOT SHOWN. GATE WILL BE ANCHORED TO THE POST NOT THE TANK. MCMASTER CARR SWING GATE MODEL 8109T11 - STYLE D, GATE TO BE PAINTED SAFETY YELLOW.  
 MACHINE MODEL NUMBER: WCRT-400-001



NAMEPLATE, ITEM 12,  
 DATA DETAIL  
 FULL SCALE

IMPORTANT: ALWAYS EXERT FORCE VERTICALLY WHEN LIFTING TANK. EXERTING FORCE AT AN ANGLE WILL RESULT IN THE DEFORMATION OF THE TANK'S SIDE WALLS.



**FINAL RECORD DRAWING**

THIS DRAWING IS SUBMITTED AS FINAL RECORD AND IS AUTHORIZED FOR FABRICATION AND ASSEMBLY. DRAWING REFLECTS TO DATE CHANGES MADE BY CUSTOMER PER RETURNED APPROVAL DRAWINGS/LATEST CHANGE ORDER/PURCHASE ORDER.

Project manager: Dan Nollin Date: 12-30-14

|   |             |            |
|---|-------------|------------|
| SHEET 1 OF 1  | PART #:     | 381107D    |
| <b>ELLIS CORPORATION</b><br>ENGINEERS AND MANUFACTURERS   |             |            |
| CRT-400 (4180/2000) GENERAL ARRANGEMENT DRAWING<br>OMNI WATER SOLUTIONS                               |             |            |
| MATERIAL  | REV. LEVEL  | DATE       |
| ALL 304 SS  | C-12/25/14  | A 12/15/14 |
| DATE  | DESIGNED BY | DATE       |
| 12/02/14  | 12/20/2014  |            |
| UNLESS OTHERWISE NOTED, THE MAKER SHALL BE RESPONSIBLE FOR THE DESIGN AND FABRICATION OF THE DRAWING. |             |            |
| DRAWING NO. 381107D   |             |            |
| SCALE: Vertical   |             |            |
| PROJ. CLASS: 38   |             |            |
| SHEET: 1107   |             |            |
| D   |             |            |