

R Platinum 700 Cartridge Filter Housings

Ultra high capacity filter eliminates maintenance by providing high dirt removal

These new cartridge housings are designed to end the high cost of cartridge change-out. They are offered in three Model 8 styles (LCO, Polypropylene, and Standard Model 8) and Multi-cartridge housings.

Standard Features

- From 1 to 29 cartridges
- Multi-cartridge units are offered in the low profile design, for quick and easy cartridge removal
- Horizontal or vertical mount
- Housings available in carbon steel, 304 or 316 stainless steel and polypropylene
- Pressure ratings in 100, 125, and 150 psi
- ASME code stamp available on selected models
- Flanged or threaded connection sizes from 2-inch through 10-inch
- Covers are o-ring sealed and easy to remove
- Leg assembly (excludes CR8)
- Clean and dirty/gage port connections
- O-ring seals: Buna, Ethylene Propylene, Viton®, and Teflon® Encapsulated Viton®

A single 700 Series cartridge unit will out perform 40 standard wound or 10 pleated cartridges, reducing maintenance. A decrease in cartridge use, reduces labor, inventory, worker exposure and disposal costs. A single cartridge holds as much as 20 pounds of contaminant and flows to 100 gallons per minute. The labor-intensive v-posts and spring seals are eliminated and cartridges are easily removed, requiring no special tools. Elements are approximately 6.25-inch diameter and 35-inch length.



LCO8135



8135



CR8135

For more detailed design information about the 700 Series cartridge element see page 181.



HM

Single Cartridge Platinum 700 Filter Housing

How To Order

Build an ordering code as shown in the example

Example: CR8135 - 2F - 1- 150 - P - B - 700 - C

MODEL NUMBER

Low Pressure, 1 Element = **LCO8135**

Poly-Pro, 1 Element = **CR8135**

Model 8, 1 Element = **NCO8135 or 8135**

PIPE SIZE, FLANGED

CR8, Flat Face class 150 = **2F**

RCO, LCO8, female NPT = **2P**

Model 8, RF class 150, or FNPT = **2F or 2P**

OUTLET STYLE

Side In/Bottom Out = **1**

Side In/Side Out = **2**

PRESSURE RATING

Low pressure = **125 psi**

Poly Pro = **100 psi**

Model 8 = **150 psi**

HOUSING MATERIAL

Carbon Steel = **C**

304 Stainless Steel = **S**

316 Stainless Steel = **S316**

Polypropylene (CR8 only) = **P**

COVER GASKET

Buna = **B**

Ethylene Propylene = **E**

Viton® Fluorelastomer = **V**

Teflon® Encapsulate Viton® = **TEV**

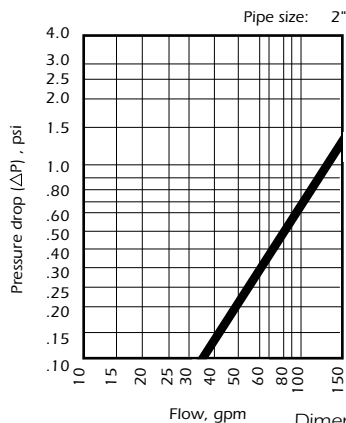
ELEMENT SERIES

Model 8 = **700**

ASME CODE OPTION

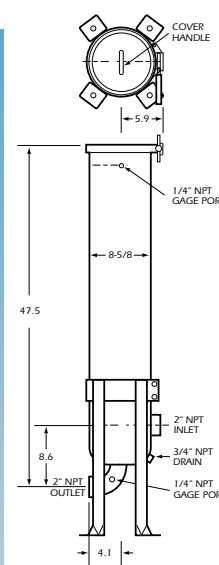
ASME Code Stamp (8135 only) = **C**

NSF 61 listed (8135 only) = **NSF**

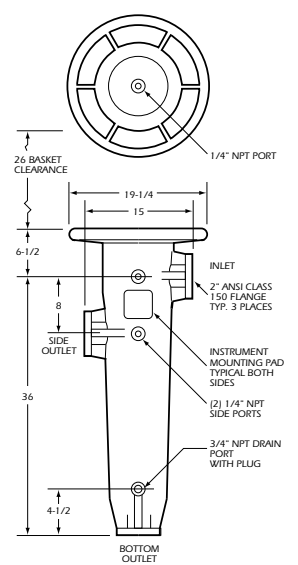


Dimensions (IN)

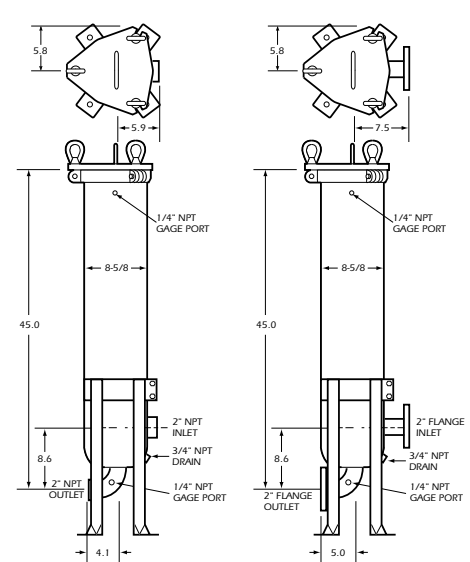
LCO8135



CR8135



8135



Viscosity Factors

	CPS NUMBER							
1 (H ₂ O)	50	100	200	400	600	800	1000	2000
.65	.85	1.00	1.10	1.20	1.40	1.50	1.60	1.80

*Based on housing only. Fluid viscosity, filter cartridge used, and expected dirt loading should be considered when sizing a filter.

Dimensions are reference only and should not be used for hard plumbing. Consult factory for certified drawings.

Multiple Cartridge Platinum 700 Filter Housing

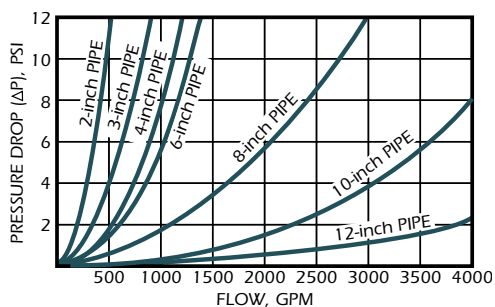
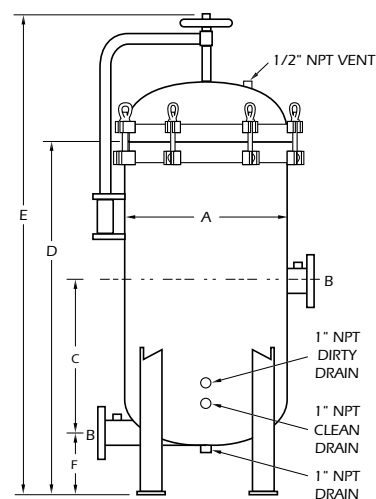
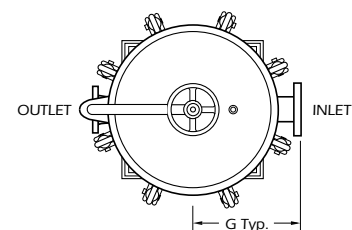


How To Order

Build an ordering code as shown in the example

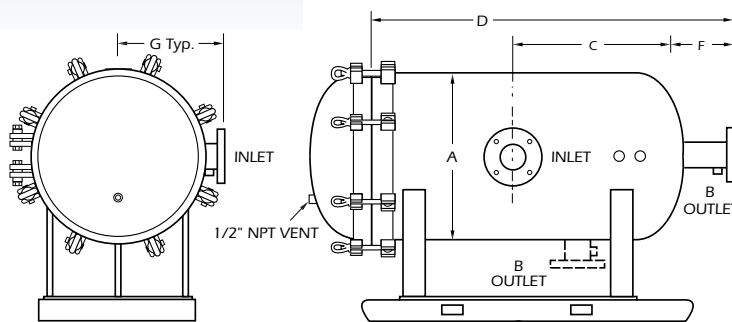
Example:	SLP-18435 - 3F - 1- 150 - S - B - 700 - C
HOUSING STYLE	
Standard Low Profile = SLP	
Horizontal Mount = HM	
MODEL NUMBER	
Model 18,4 Elements = 18435	
Model 24,7 Elements = 24735	
Model 36,18 Elements = 361835	
Model 42,21 Elements = 422135	
Model 48,29 Elements = 482935	
PIPE SIZE, FLANGED	
Model 18 = 2F or 3F	
Model 24 = 3F or 4F	
Model 36 = 4F, 6F or 8F	
Model 42 = 8F, 10F or 12F	
Model 48 = 8F, 10F or 12F	
OUTLET STYLE	
Side In/Bottom Out = 1	
Side In/Side Out = 2	
PRESSURE RATING	
150 PSI = 150	
HOUSING MATERIAL	
Carbon Steel = C	
304 Stainless Steel = S	
316 Stainless Steel = S316	
COVER GASKET	
Buna = B	
Ethylene Propylene = E	
Viton® Fluorelastomer = V	
Teflon Encapsulate Viton® = TEV	
ELEMENT SERIES	
= 700	
ASME CODE OPTION	
ASME Code Stamp = C	
NSF 61 listed = NSF	

Dimensions (IN)



*Based on housing only. Fluid viscosity, filter cartridge used, and expected dirt loading should be considered when sizing a filter.

Dimensions are reference only and should not be used for hard plumbing. Consult factory for certified drawings.



MODEL NO. & Dim. A	Pipe Sizes B	Leg Bolt Circle Dia.	C	D	E	F	G
18	2	16.0	22.2	49.4	68.2	8.00	14.0
	3		21.6	49.8	68.7	9.00	14.0
24	3	22.0	23.1	51.3	71.7	9.00	18.0
	4		22.6	50.8	71.2	9.00	19.0
36	4	34.0	27.4	55.9	77.7	9.50	25.0
	6		26.3	55.9	77.6	10.5	26.0
	8		25.3	55.9	77.6	11.5	27.0
42	10	40	36.0	60.0	92.0	10.0	34.0
48	12	42	38.5	62.0	98.0	12.0	38.0

The Platinum 900 and 2040 Cartridge Filter Housings

Ultra high capacity filtration system provides maximum dirt holding capacity—eliminating maintenance

End the high cost of element change-out with the Platinum 900 and 2040 cartridge filter system. Imagine changing a filter element only once or twice a year, instead of changing several cartridges on a weekly or daily basis!

Standard Features

- Housings available in carbon steel, 304 or 316 stainless steel.
- Pressure rating 150 psi
- Clean and dirty/gauge port connections
- O-ring seals: Buna, Ethylene Propylene and Viton®
- Covers are o-ring sealed and easy to remove
- ASME code stamp (optional)
- Flange connection sizes from 3-inch through 10-inch
- Cable-hoist assembly for quick and easy removal of element is standard on Model 18 (optional on other models)

A single cartridge system has the life of hundreds of standard wound or 50 pleated cartridges. This reduces maintenance and cartridge use, labor, inventory, worker exposure, and disposal costs.

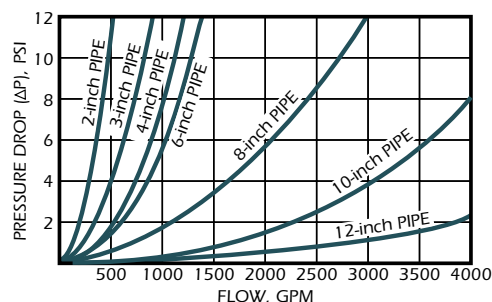
Flow rates and contaminant holding capacities vary depending on micron size. A single cartridge element can hold up to 400 pounds of contaminant and flows to 600 gallons per minute. Elements are 13- or 20-inch diameter and 40-inches long.

The 900 Series filter housings contain one, three, four, seven, or eight cartridges. The 2040 Series is available a single cartridge.

By using the cable-hoist assembly change-out is completed in minutes. The element shipping container allows for easy handling and disposal.



Extra large cartridges hold more contaminate.



* Based on housing only. Fluid viscosity, filter cartridge used, and expected dirt loading should be considered when sizing a filter.

Viscosity Factors

		CPS NUMBER							
1 (H ₂ O)	50	100	200	400	600	800	1000	2000	
.65	.85	1.00	1.10	1.20	1.40	1.50	1.60	1.80	

For more detailed design information and how to order the 900 and 2040 Series cartridge element see page 182.

How To Order

Build an ordering code as shown in the example

Example: SLP - 18140 - 4F - 1- 150 - S - B - 900 - C

HOUSING STYLE

Standard Low Profile = **SLP**

MODEL NUMBER

Model 18, 1 Element = **18140**

Model 22, 1 Element = **22140**

Model 30, 3 Elements = **30340**

Model 36, 4 Elements = **36440**

Model 42, 7 Elements = **42740**

Model 48, 8 Elements = **48840**

PIPE SIZE, FLANGED

Model 18 = **2F or 3F**

Model 30 = **4F or 6F**

Model 36 = **6F or 8F**

Model 42 = **8F or 10F**

Model 48 = **8F or 10F**

OUTLET STYLE

Side In/Side Out = **1**

PRESSURE RATING

150 PSI = **150**

HOUSING MATERIAL

304 Stainless Steel = **S**

Carbon Steel = **C**

316 Stainless Steel = **S316**

COVER GASKET

Buna = **B**

Ethylene Propylene = **E**

Viton® Fluorelastomer = **V**

Teflon® Encapsulated Viton® = **TEV**

ELEMENT SERIES = **900**

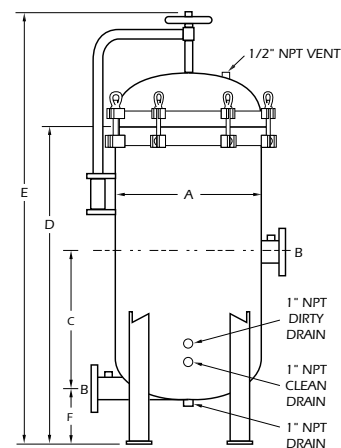
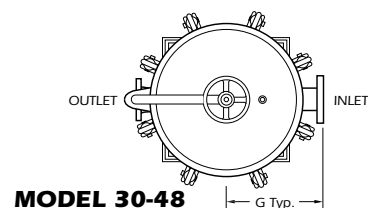
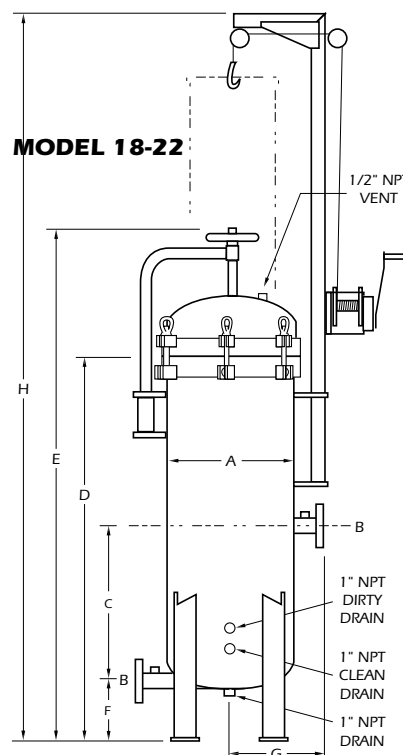
= **2040** (22140 element only)

ASME CODE OPTION

ASME Code Stamp = **C**

MODEL NUMBER & Dim. A	Pipe Sizes B	Leg Bolt Circle Dia.	C	D	E	F	G	H
18	2	16.0	22.2	53.4	72.2	8.0	14.0	101.8
	3		21.6	53.8	72.7	9.0	15.0	102.3
22	4	14.6	24.0	58.9	76.9	6.0	17.25	107.6
30	4	28.0	29.9	56.2	76.6	9.0	22.5	
	6		28.8	56.2	76.6	10.0	23.0	
36	6	34.0	28.7	57.7	79.5	10.5	26.0	
	8		27.3	57.7	79.5	11.5	27.0	
42	8	40.0	26.3	60.0	83.3	11.5	29.5	
	10		25.2	59.9	83.2	12.5	30.0	
48	8	46.0	29.2	61.2	86.7	11.5	32.5	
	10		28.1	61.1	86.6	12.5	33.0	

Dimensions (IN)



Dimensions are reference only and should not be used for hard plumbing. Consult factory for certified drawings.